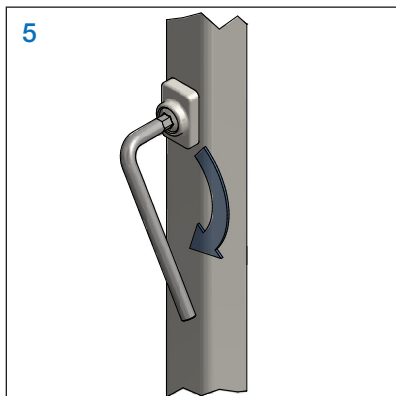
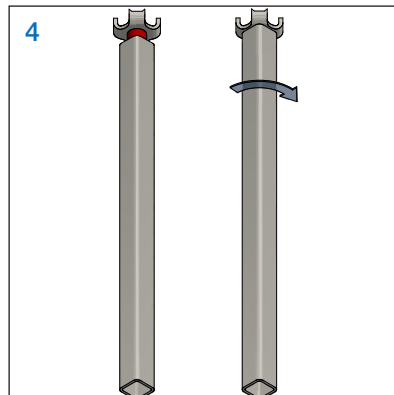
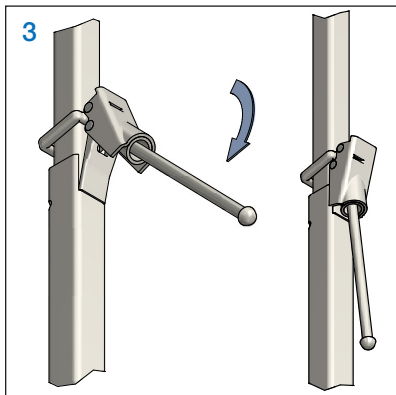
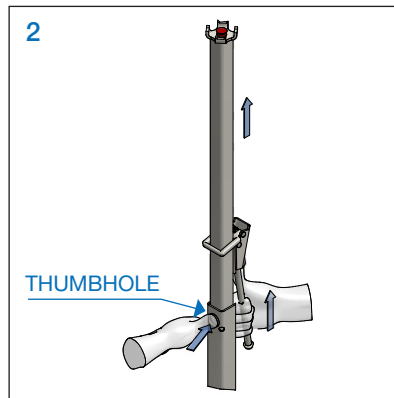
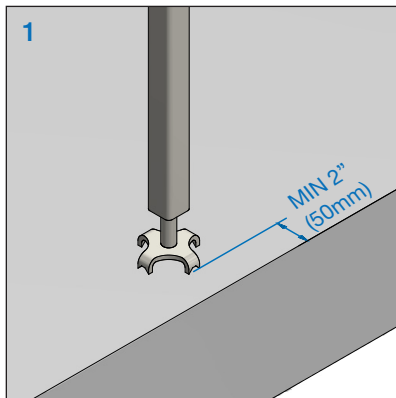
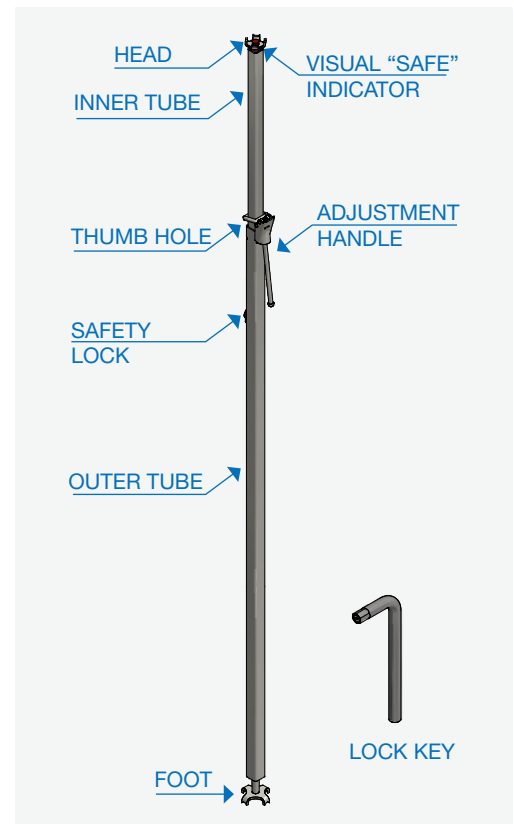


**INSTALLATION**



When all the steps are completed, the Speed Post is ready for the Speed Fence or temporary guardrail to be installed



Maximum spacing of Speed Posts not to exceed 9' (2743 mm)

**WEIGHT: 24.5 lbs / 11.1 kg**  
**MAX HEIGHT: 10'8" / 3251 mm**  
**CLOSED HEIGHT: 6'6" / 1981 mm**

**STEP 1**

Ensure bottom foot is fully threaded in. Locate Speed Post and ensure it is visually plumb. Minimum edge distance: 2" (50 mm)

**STEP 2**

Raise the Speed Post with the handle until the head contacts the slab above. Press thumb firmly in the thumb hole to hold Inner Tube in place.

**STEP 3**

Slide the handle down until the ring sits on top of the outer tube.

Place the bottom end of the handle tongue in the slot of the outer tube.

Push the handle down to engage and lock the Speed Post.

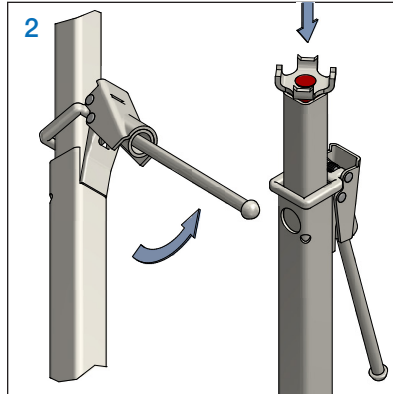
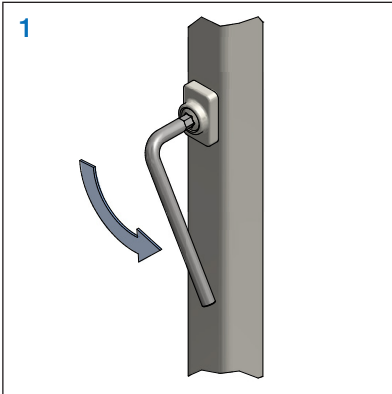
**STEP 4**

Verify there is no red showing at the visual "safe" indicator. Turn the Speed post counterclockwise until the red is no longer visible.

**STEP 5**

To prevent tampering, use the Safety Lock Key by inserting the lock key and turning clockwise until tight.

## DISMANTLING



### STEP 1

Remove the Speed Fence or temporary guardrail from the Speed Post.

Unlock the post with the Safety Lock Key by turning counterclockwise if necessary.

### STEP 2

Hold ONLY the outer tube and lift the handle. Release the ring by pushing the handle toward the inner tube – shake the handle if necessary to release the ring.

Allow the inner tube to retract fully and place the handle down before storing.

ALWAYS REFER TO GENERAL SAFETY NOTES BEFORE INSTALLATION

**SPEED**  **EDGE**

**FOR TECHNICAL ASSISTANCE:**

info@speededge.ca

905-857-9888

speededge.ca