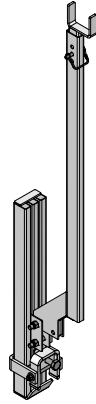
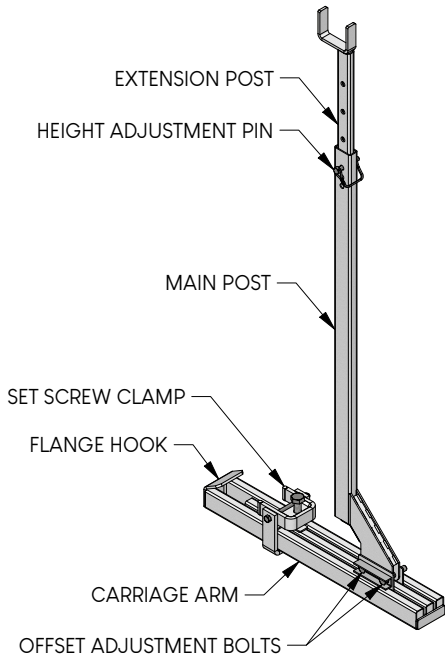


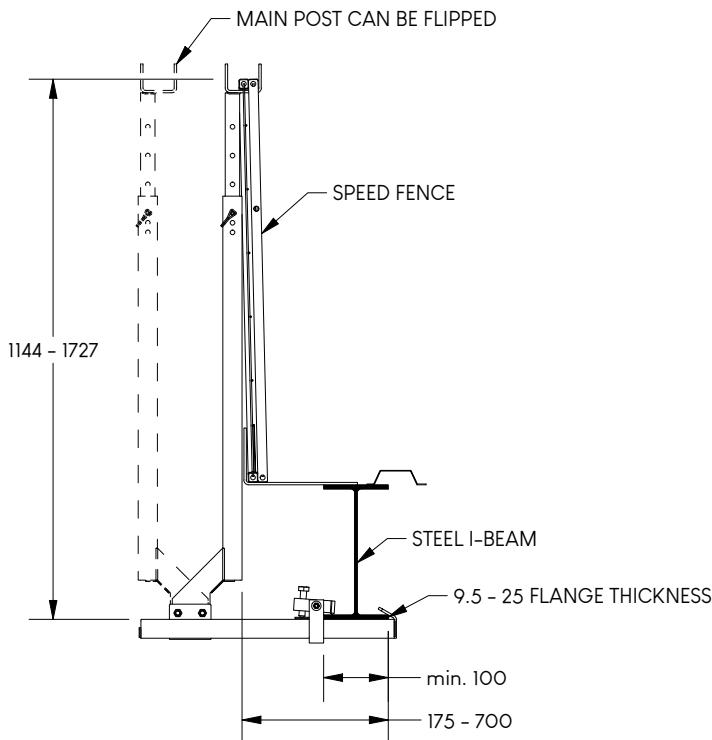
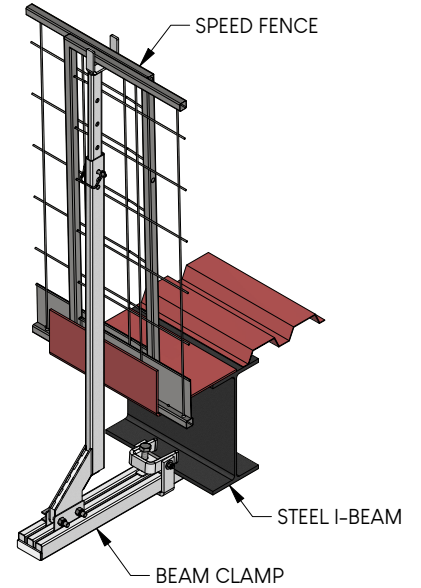
BEAM CLAMP

BC

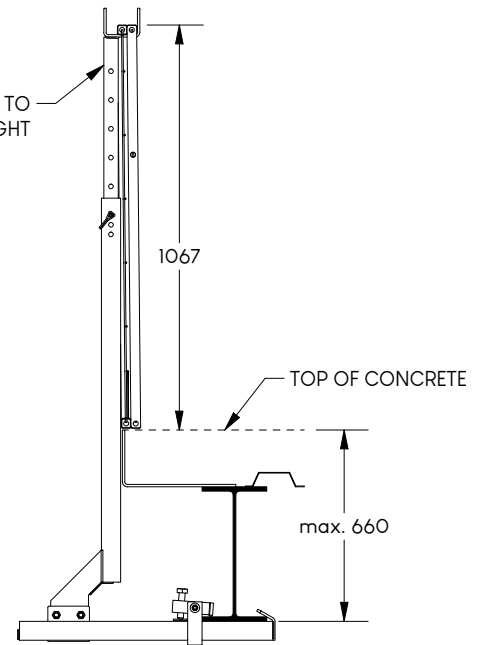
Steel I-Beam Mounting Guardrail Post



UNIT FOLDS FOR COMPACT STORAGE AND TRANSPORTATION



SET EXTENSION POST HEIGHT TO RAISE FENCE ABOVE POUR HEIGHT



POUR APPLICATION

Compliant with load requirements of all Canadian Provincial Regulations for Construction Projects.

*Maximum post spacing applies when the guardrail system consists of only Speed Edge products.

Please inquire regarding compliance in other jurisdictions or for special case scenarios.

Refer to manual for complete installation instructions.

ALL MEASUREMENTS IN mm, U.N.O.

Weight	13.6 kg
*Max. Spacing	2743 mm