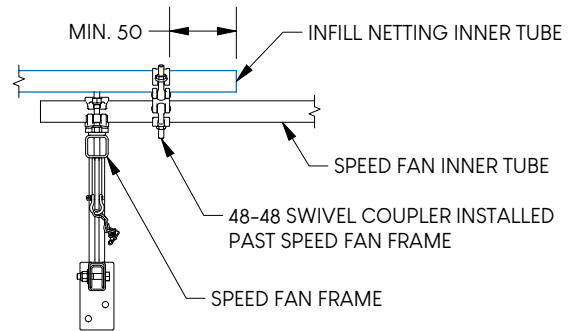
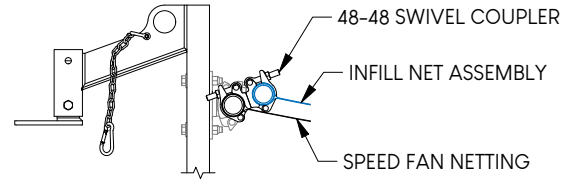
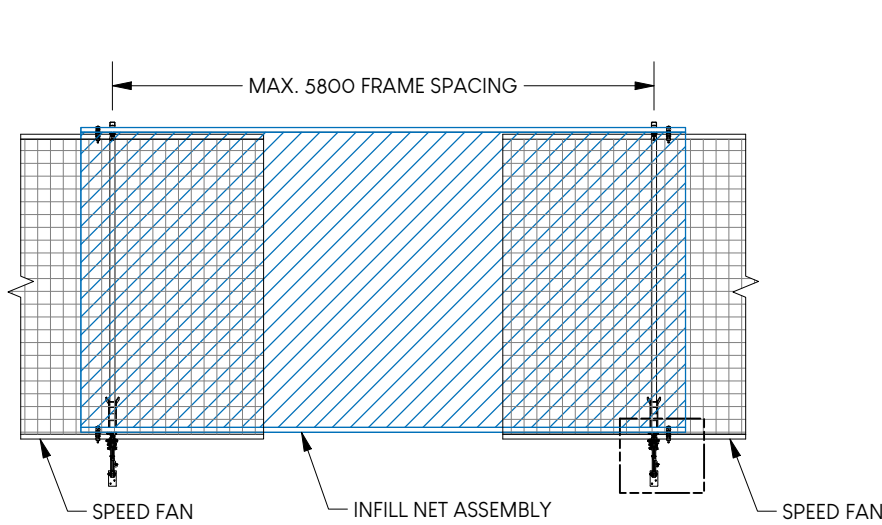


# SPEED FAN INFILL NETTING

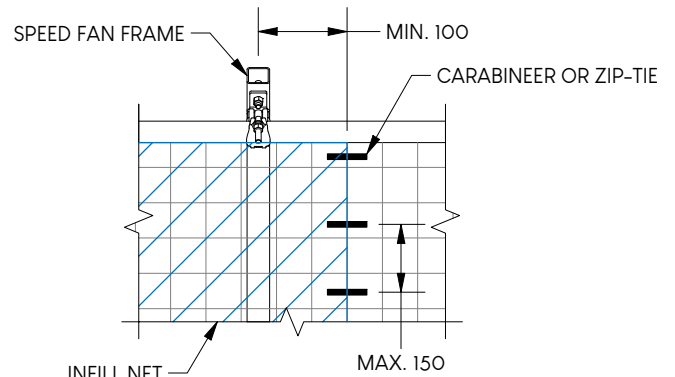
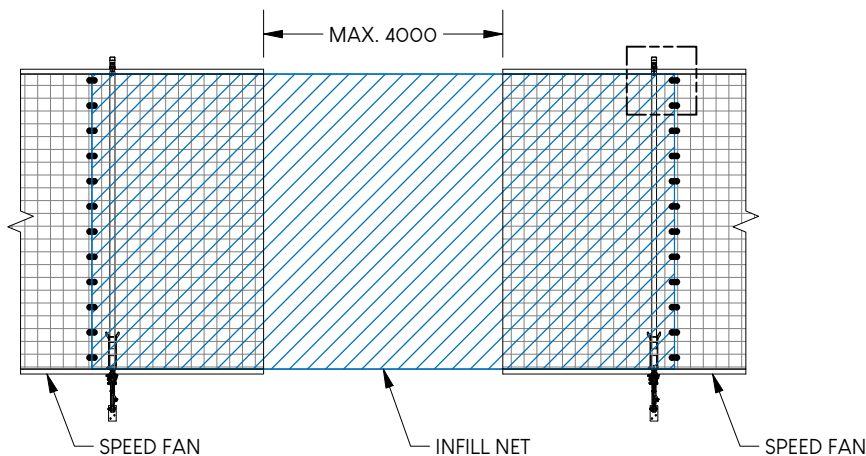
# SFIN

## Infill Net Connection Details

### COUPLED INFILL NETTING



### STITCHED INFILL NETTING



ZIP-TIE:  
MIN. 1.1 kN TENSILE STRENGTH

CARABINER:  
MIN. 0.98 kN WORKING LOAD LIMIT

Compliant with load requirements of all Canadian Provincial Regulations for Construction Projects.

Please inquire regarding compliance in other jurisdictions or for special case scenarios.

System capacity is subject to layout & installation in accordance with the sealed site-specific typical drawing(s).

Refer to manual for complete installation instructions.

ALL MEASUREMENTS IN mm, U.N.O.